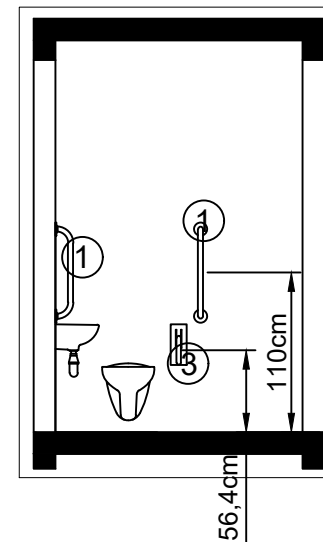
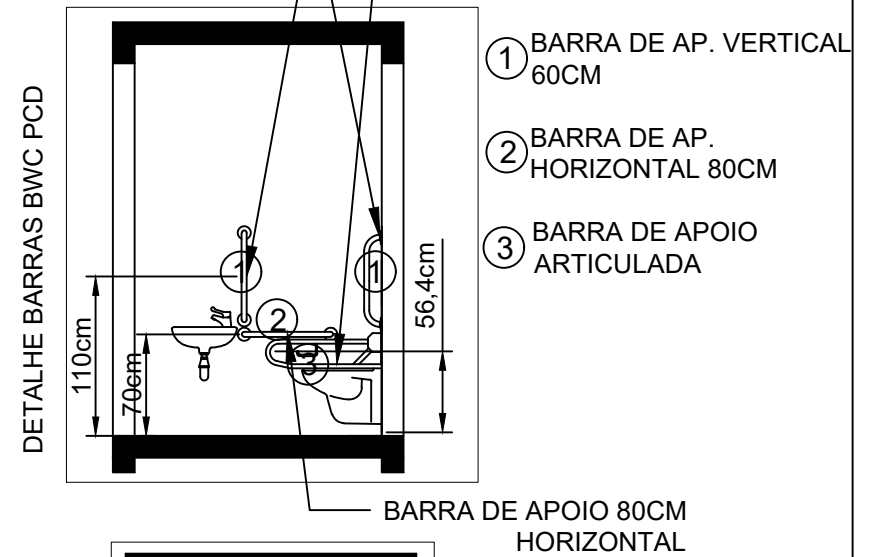
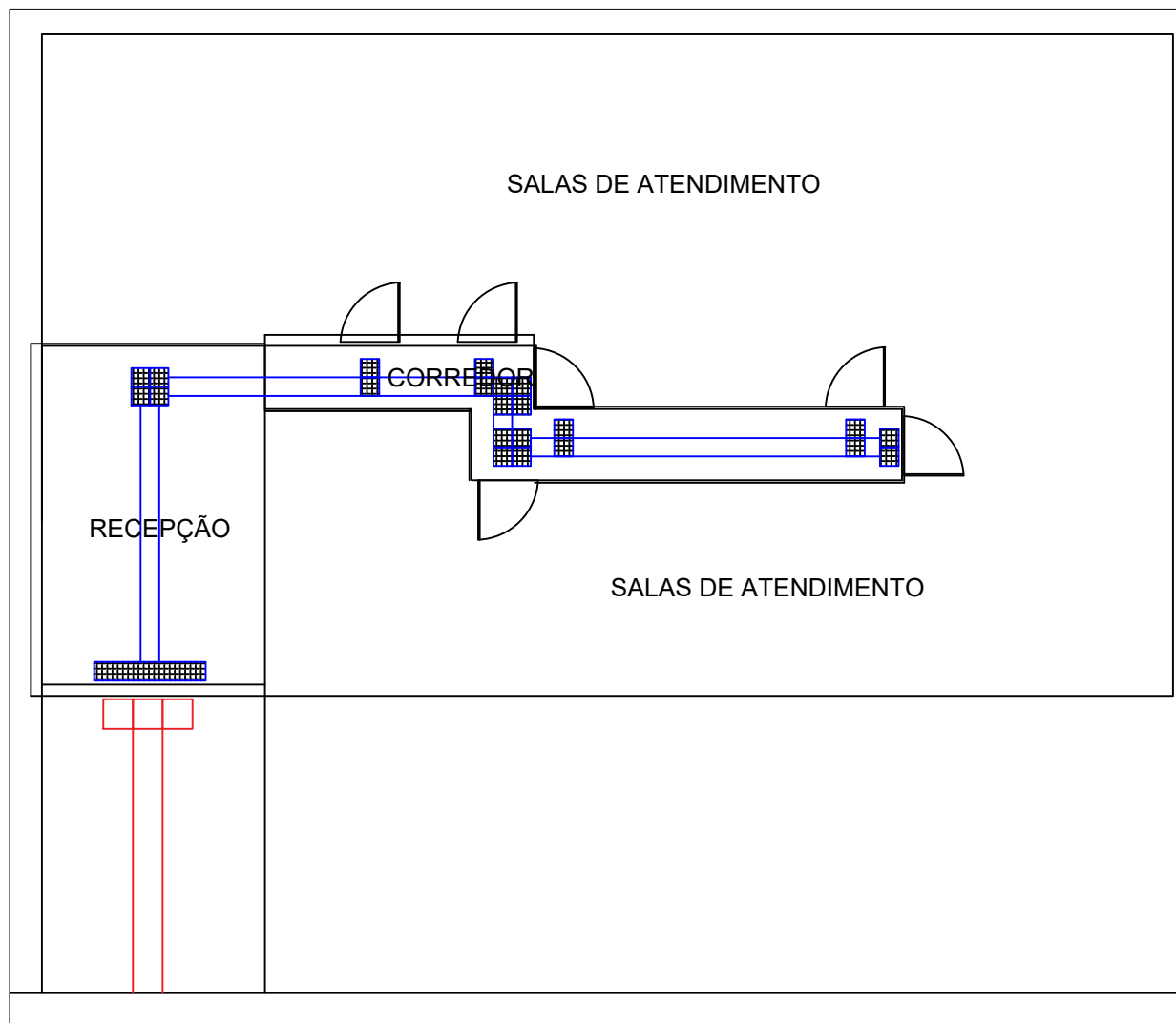


BARRA DE APOIO 60CM VERTICAL

BARRA DE APOIO ARTICULADA

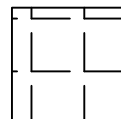


|  |  |       |
|--|--|-------|
| CROQUI DE LAYOUT APLICAÇÃO DE PISO PODOTÁTIL |  | 02/04 |
| UBS - CENTRO ESP.                            |  |       |

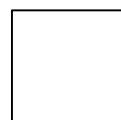


PISO PODOTÁTIL 40X40

PISO PODOTÁTIL 25X25

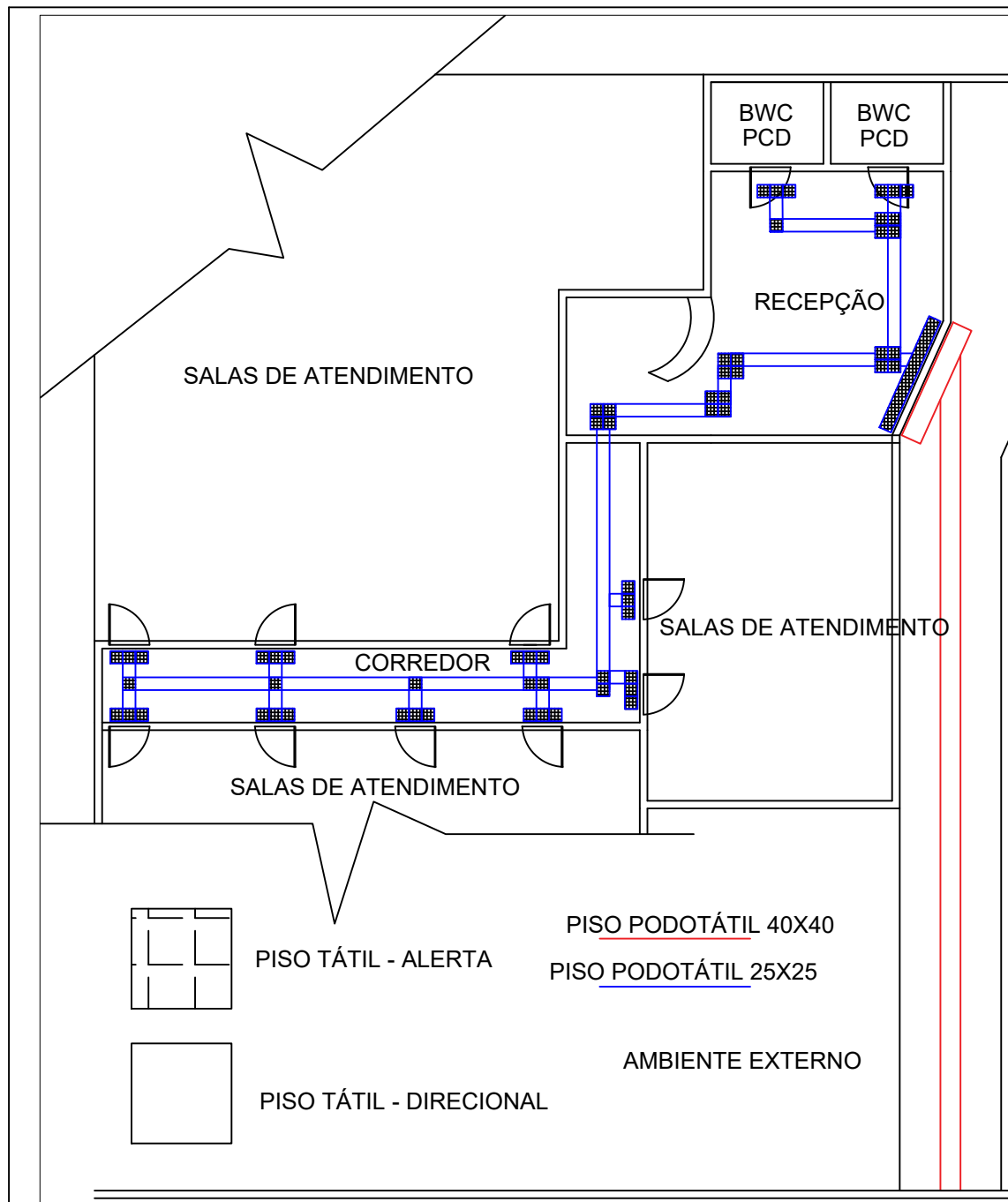


PISO TÁTIL - ALERTA



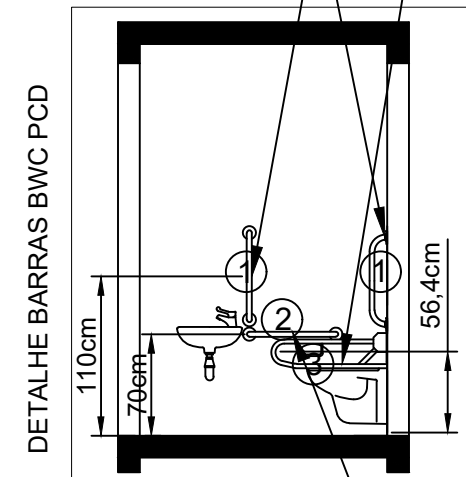
PISO TÁTIL - DIRECIONAL

|  |  |       |
|--|--|-------|
| CROQUI DE LAYOUT<br>APLICAÇÃO DE PISO<br>PODOTÁTIL |  | 03/04 |
| UBS - BEIJA-FLOR                                   |  |       |



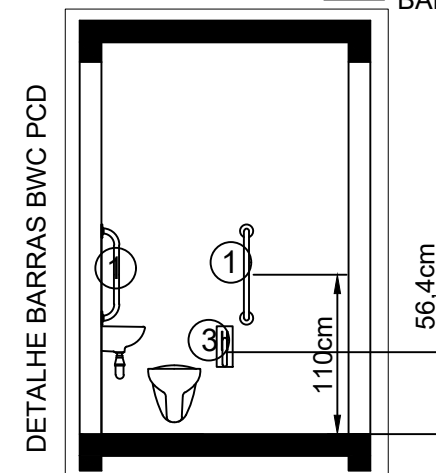
BARRA DE APOIO ARTICULADA

BARRA DE APOIO 60CM VERTICAL



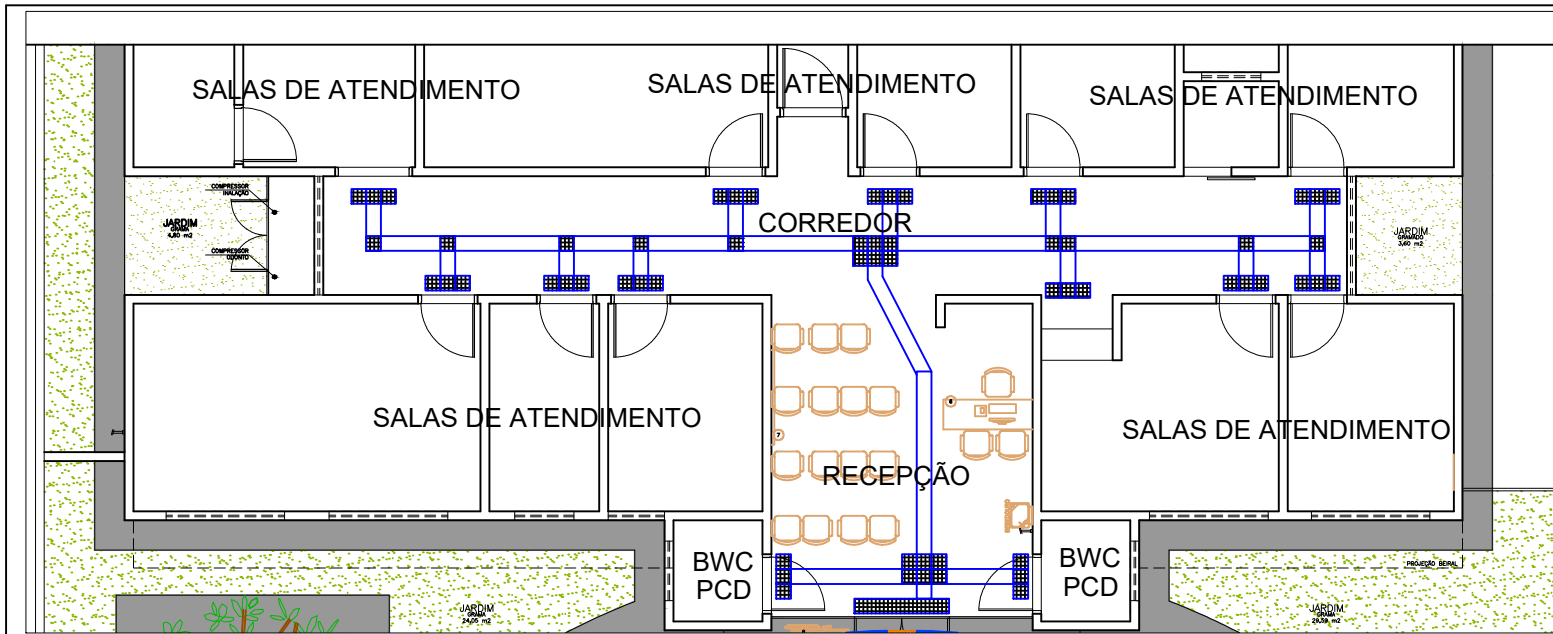
- ① BARRA DE AP. VERTICAL 60CM
- ② BARRA DE AP. HORIZONTAL 80CM
- ③ BARRA DE APOIO ARTICULADA

BARRA DE APOIO 80CM HORIZONTAL

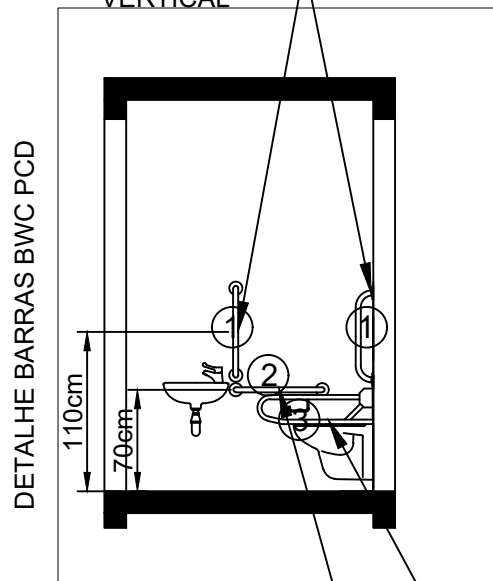


CROQUI DE LAYOUT  
 APLICAÇÃO DE PISO  
 PODOTÁTIL

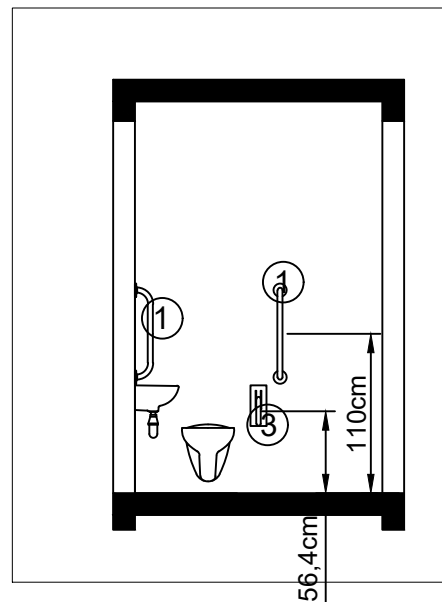
UBS - OLHO D'ÁGUA



BARRA DE APOIO 60CM VERTICAL



BARRA DE APOIO 80CM HORIZONTAL

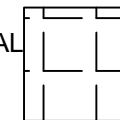


BARRA DE APOIO ARTICULADA

① BARRA DE AP. VERTICAL 60CM

② BARRA DE AP. HORIZONTAL 80CM

③ BARRA DE APOIO ARTICULADA



PISO TÁTIL - ALERTA



PISO TÁTIL - DIRECIONAL

PISO PODOTÁTIL 40X40

PISO PODOTÁTIL 25X25

CROQUI DE LAYOUT  
APLICAÇÃO DE PISO  
PODOTÁTIL

UBS - OLHO D'ÁGUA  
UBS - ENCRUZO  
UBS - CAMACHO

01/04