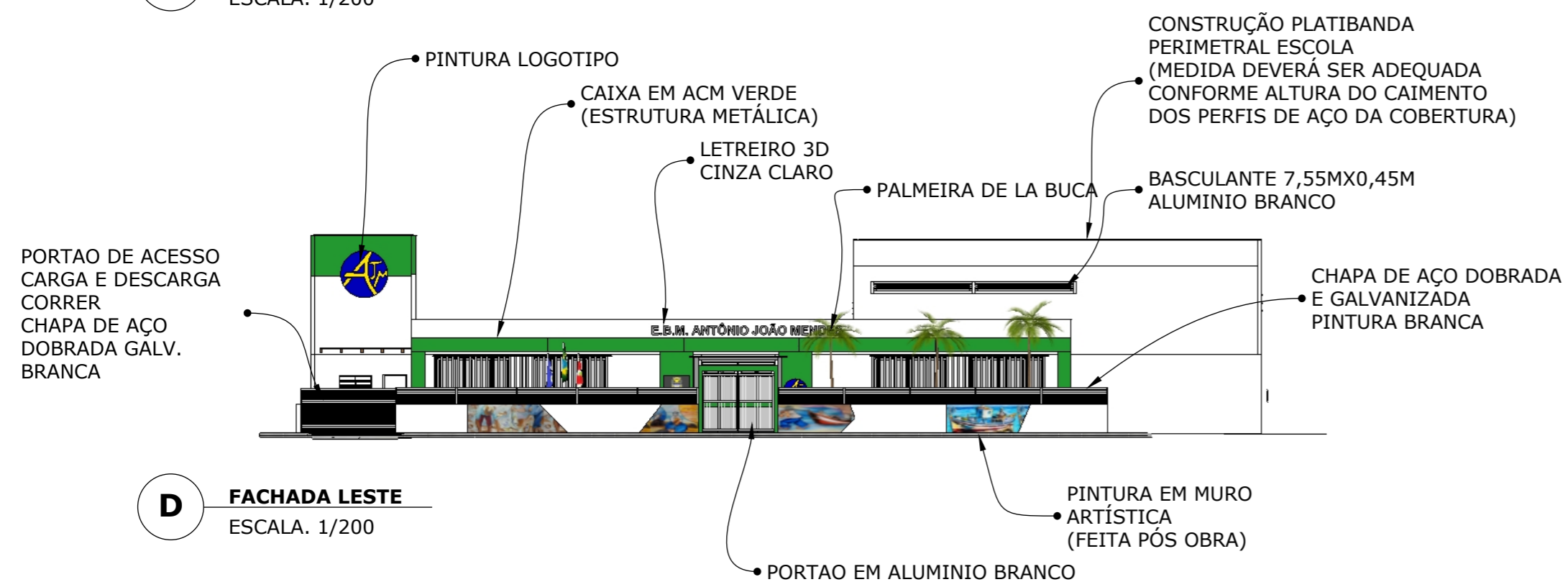
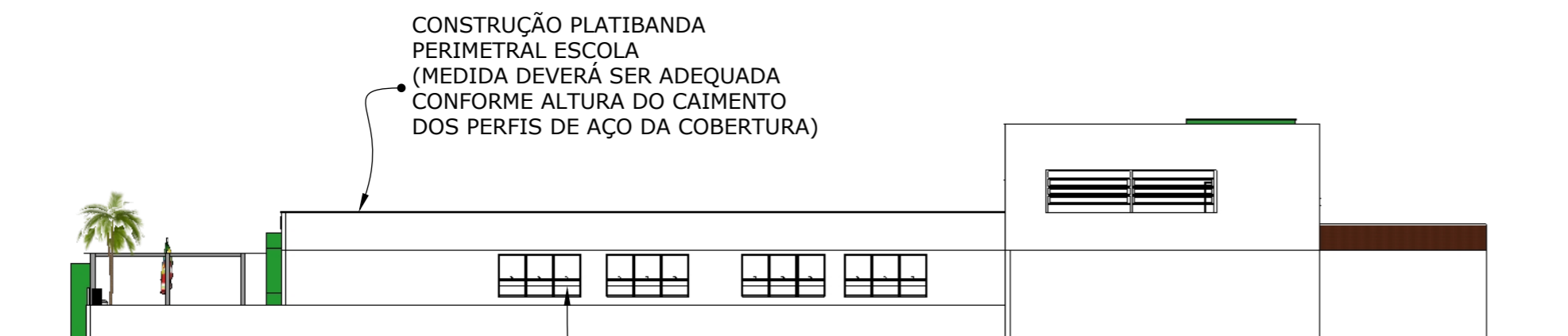


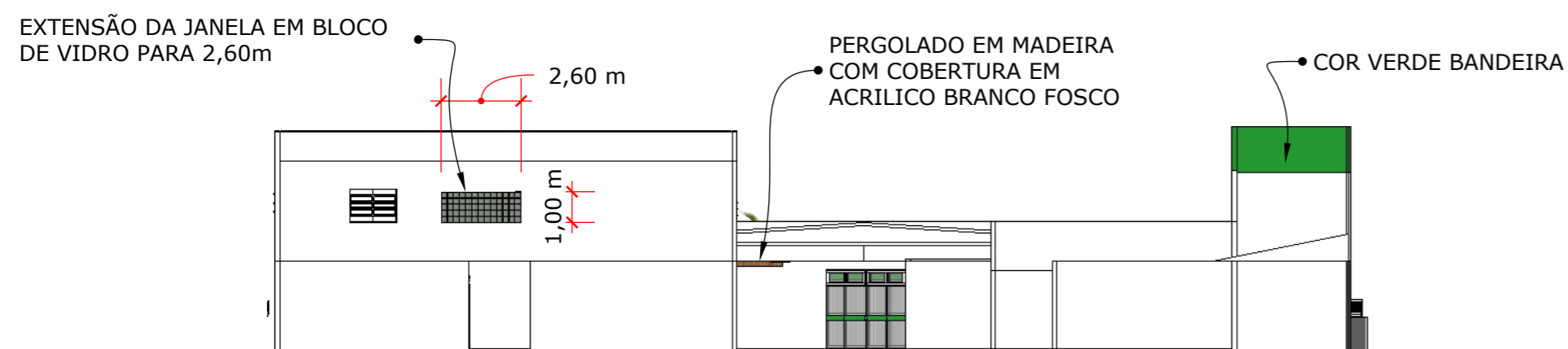
C FACHADA SUL
ESCALA. 1/200



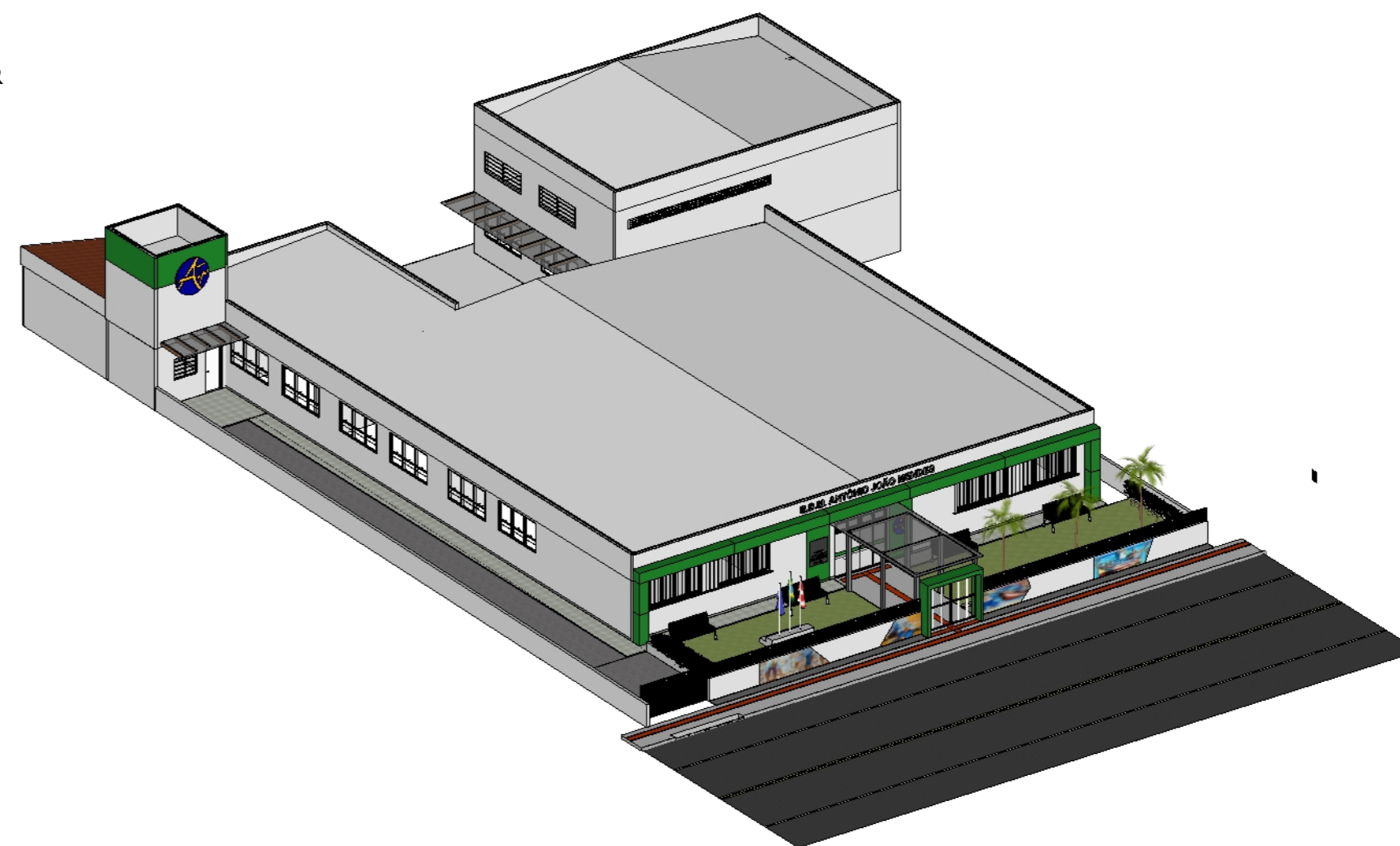
D FACHADA LESTE
ESCALA. 1/200



E FACHADA NORTE
ESCALA. 1/200



F FACHADA OESTE
ESCALA. 1/200



G PERSPECTIVA
SEM ESCALA



MUNICÍPIO DE
JAGUARUNA

PROJETO DE REFORMA
ESCOLA BÁSICA ANTÔNIO JOÃO MENDES

CONTEÚDO: FACHADAS

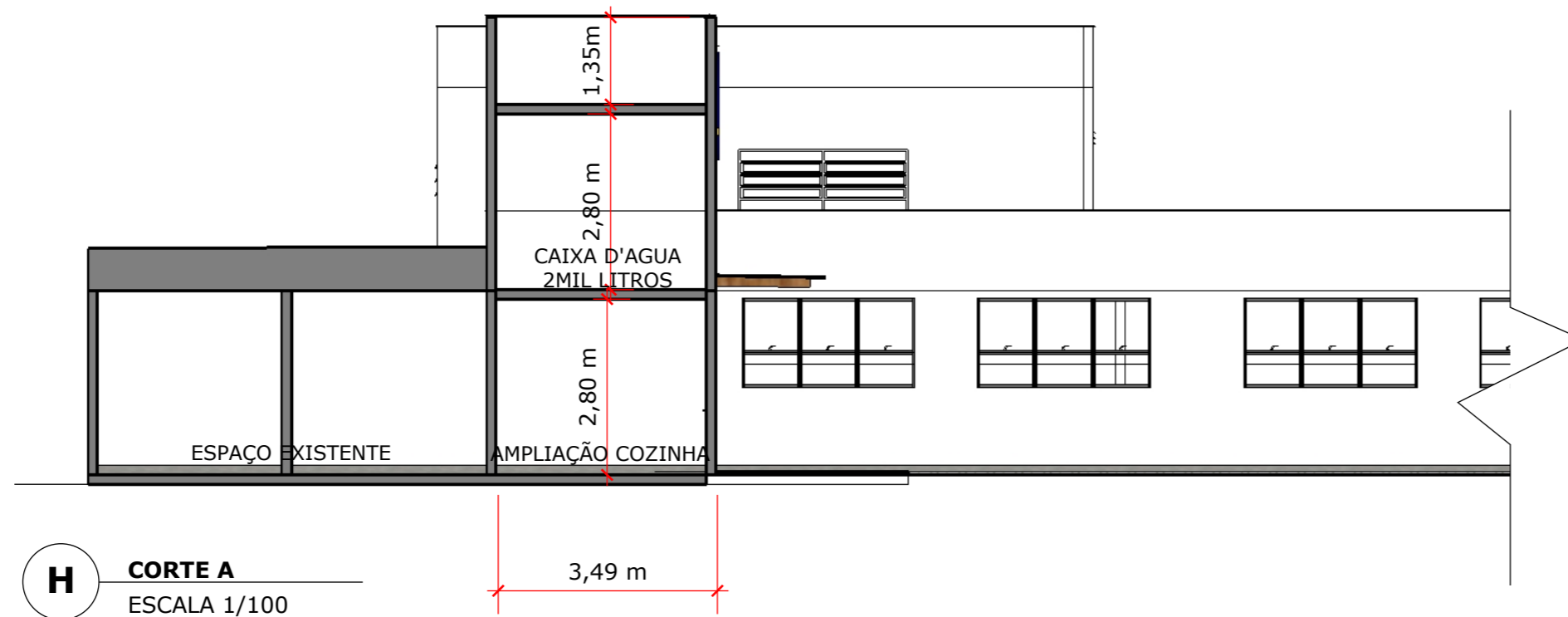
LOCALIZAÇÃO: RODOVIA SC 100 - BALNEÁRIO CAMACHO - JAGUARUNA-SC

17/06/2021

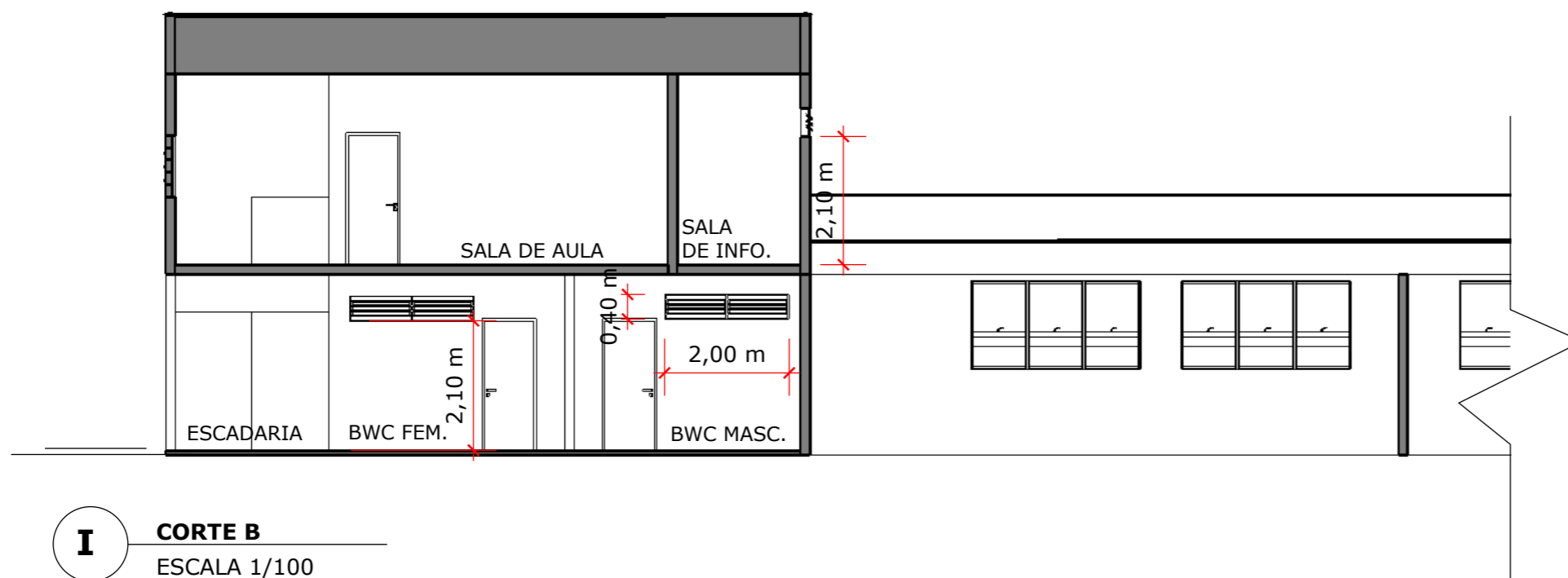
ESC: IND.

PREFEITURA MUNICIPAL DE JAGUARUNA

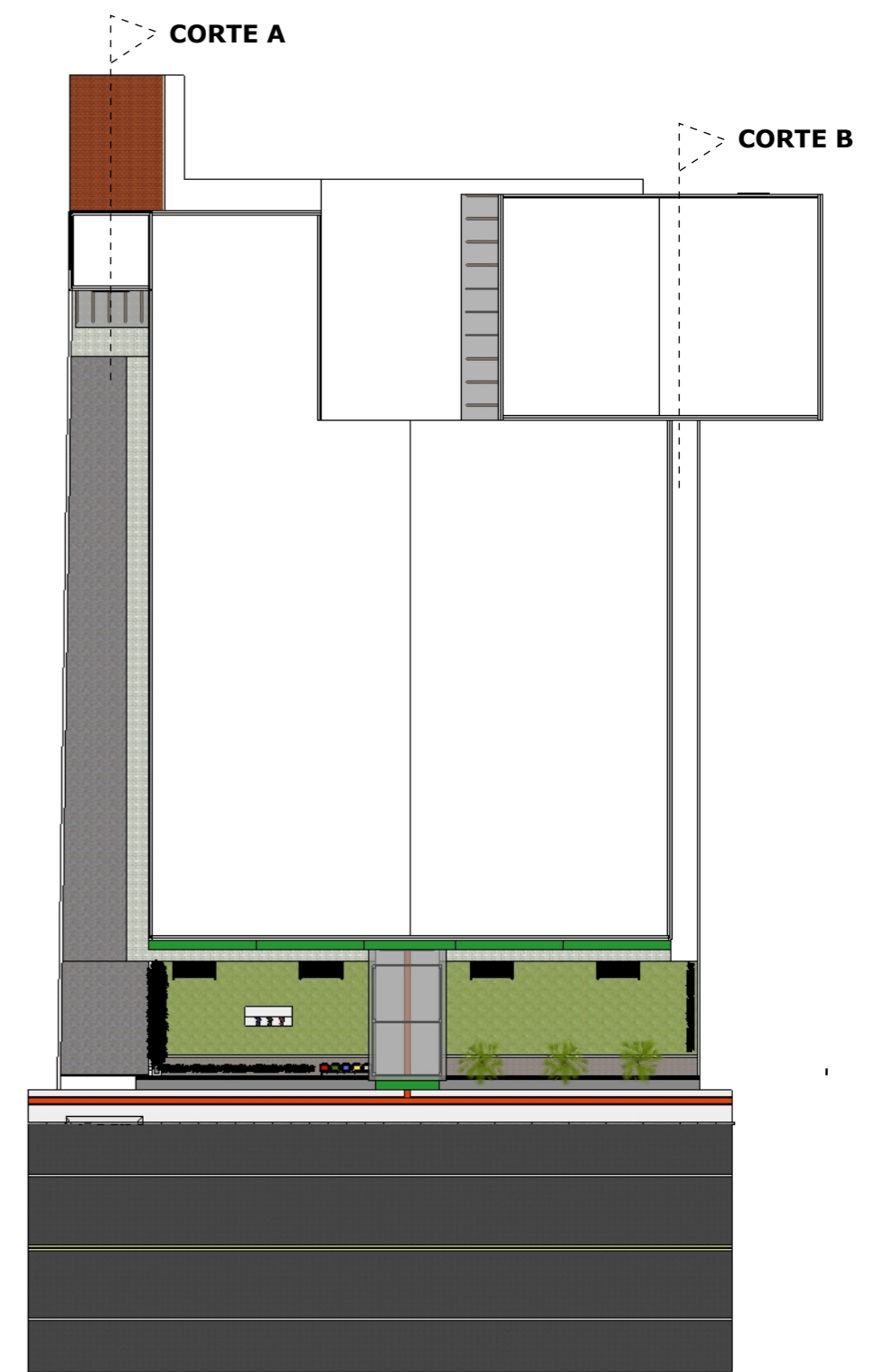
02/
04



H CORTE A
ESCALA 1/100



I CORTE B
ESCALA 1/100



E INDICAÇÃO CORTE
SEM ESCALA



MUNICÍPIO DE JAGUARUNA

**PROJETO DE REFORMA
ESCOLA BÁSICA ANTÔNIO JOÃO MENDES**

CONTEÚDO: CORTE A e B.

LOCALIZAÇÃO: RODOVIA SC 100 - BALNEÁRIO CAMACHO - JAGUARUNA-SC

17/06/2021

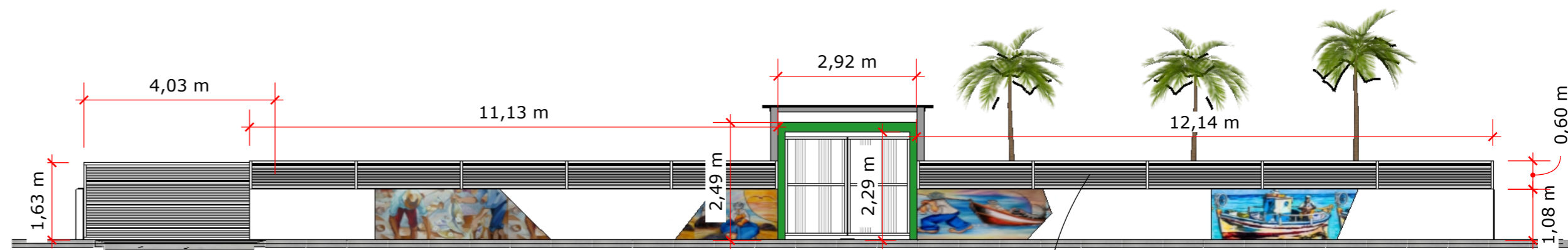
ESC: IND.

PREFEITURA MUNICIPAL DE JAGUARUNA

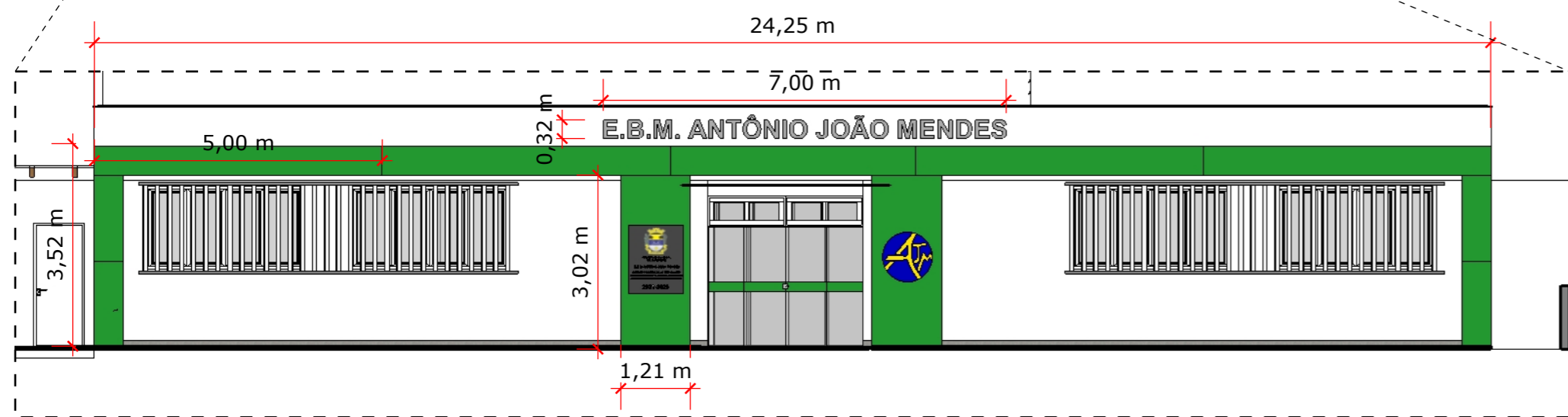
03/
04



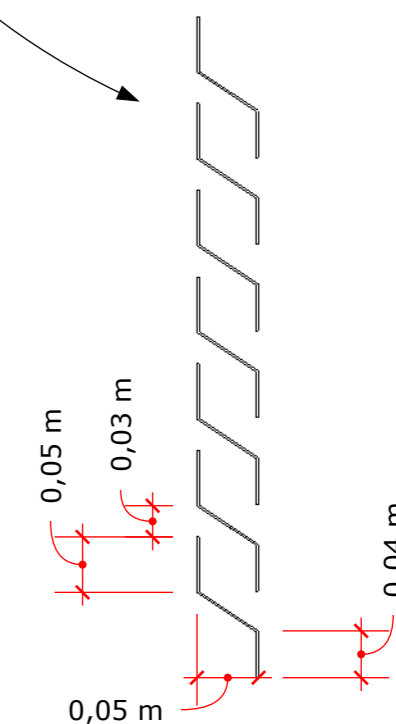
DETALHE CAIXA ACM - VISTA FRONTAL
ESCALA 1/200



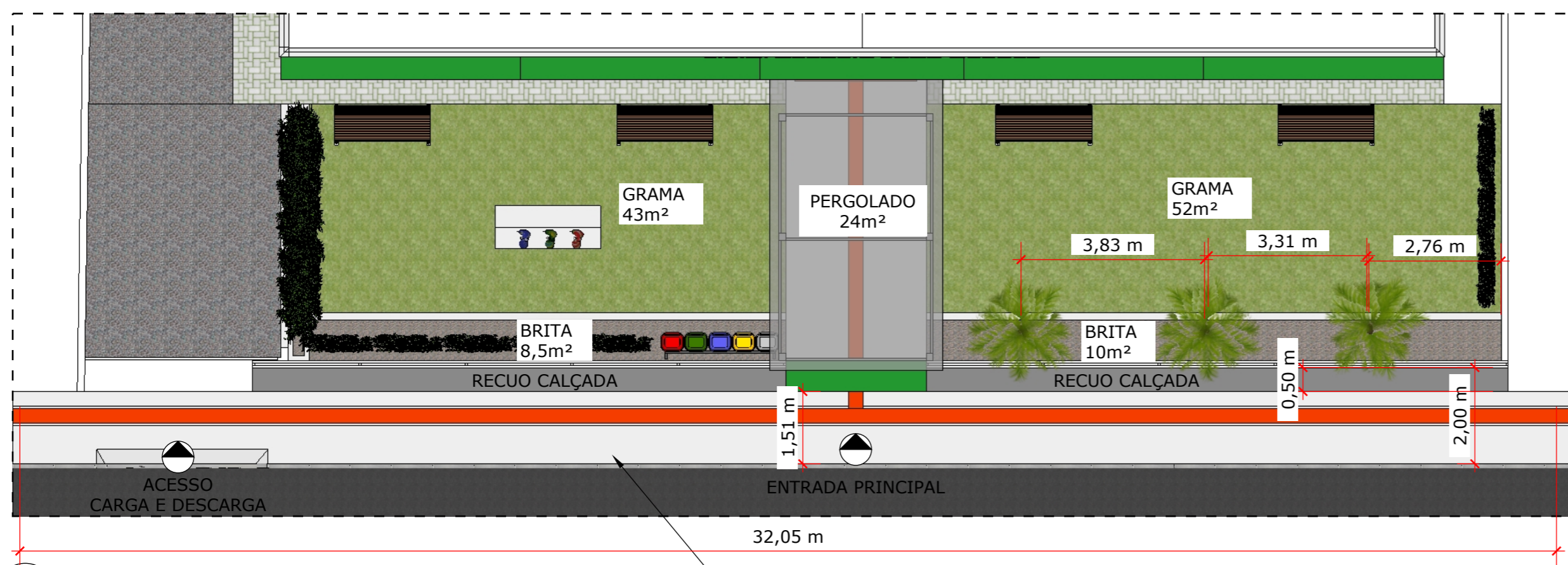
L MURO
ESCALA 1/100



J DETALHE CAIXA ACM - VISTA FRONTAL
ESCALA 1/100



CHAPA GALVANIZADA DOBRADA
COR BRANCA
(MURO)



K PAISAGISMO
ESCALA 1/100

• CALÇADA COM PISO DIRECIONAL TÁTIL
PISO EM PAVER



MUNICÍPIO DE
JAGUARUNA

PROJETO DE REFORMA
ESCOLA BÁSICA ANTÔNIO JOÃO MENDES

CONTEÚDO: DETALHES

LOCALIZAÇÃO: RODOVIA SC 100 - BALNEÁRIO CAMACHO - JAGUARUNA-SC

17/06/2021

ESC: IND.

PREFEITURA MUNICIPAL DE JAGUARUNA

04/04